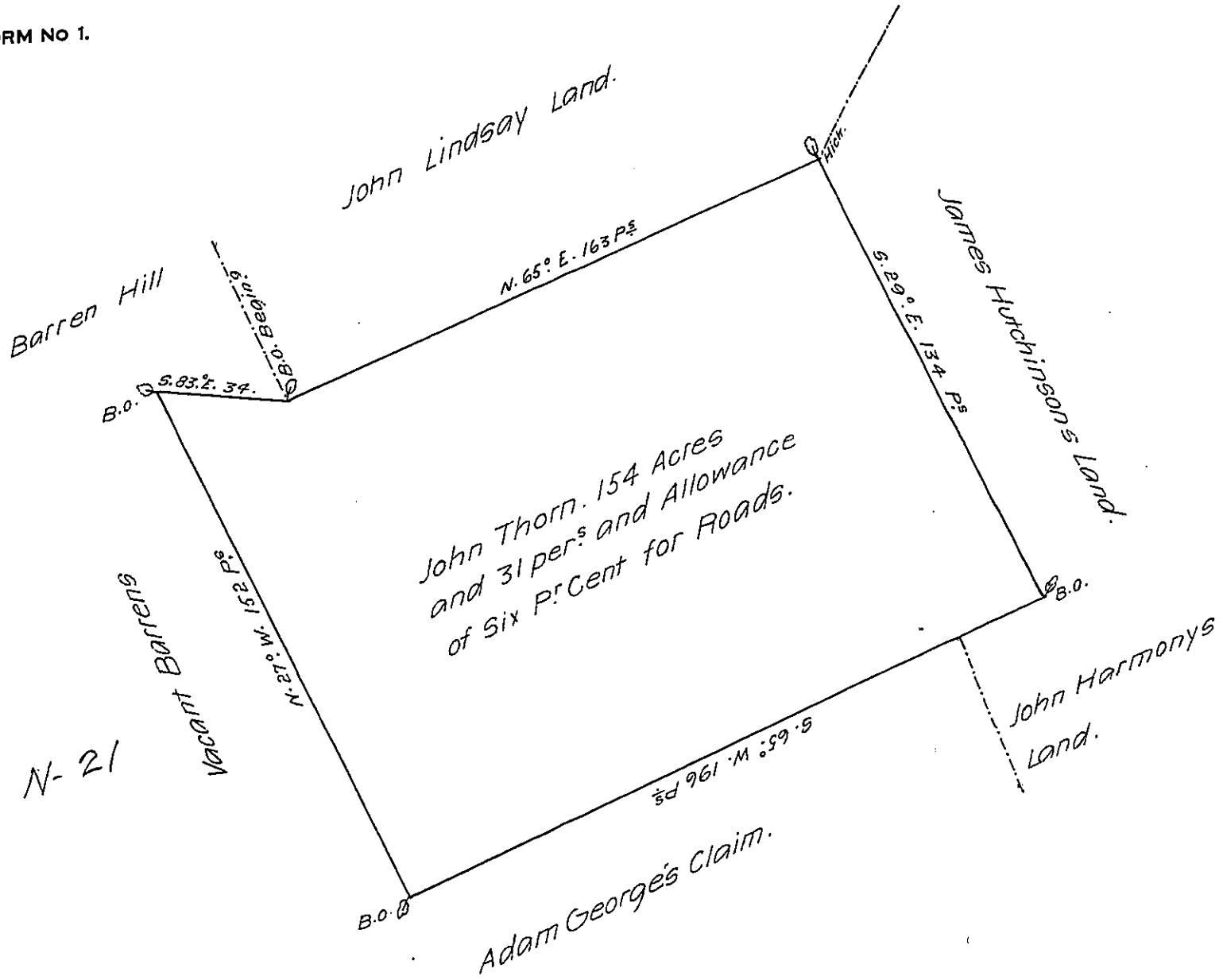


FORM NO 1.



A Draught of a Tract of Land Situate in Gilford Township in Cumberland County Containing One Hundred and fifty four acres and Thirty one per. And the usual Allowance of Six Per Cent for Roads. Surveyed for John Thorn April 6<sup>th</sup> 1763. In pursuance of the Honourable the Proprietaries Warrant Bearing Date this Eighth Day of June Anno Domini 1762.

John Armstrong. D.S.

To M<sup>r</sup> John Lukens

Surveyor General.

now Franklin County.

IN TESTIMONY that the above is a copy of the original remaining on file in the Department of Internal Affairs of Pennsylvania, made conformably to an Act of Assembly approved the 16th day of February, 1833, I have hereunto set my Hand and caused the Seal of said Department to be affixed at Harrisburg, this twenty second day of April 1907.

*George R. ...*  
Secretary of Internal Affairs.